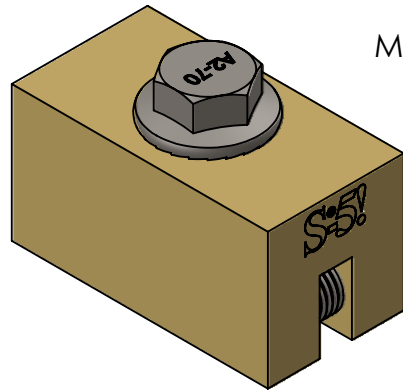
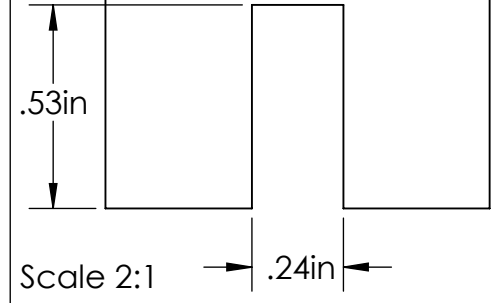
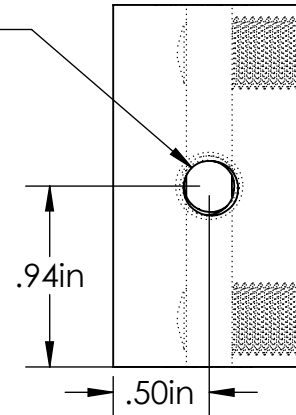


S-5-B



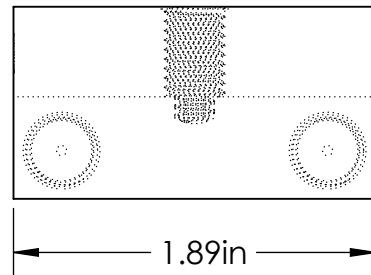
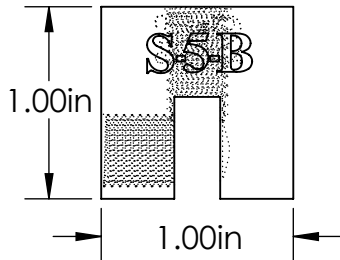
M8-1.25 Threaded Hole

Top

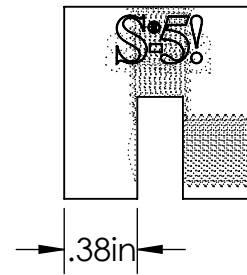


Back

Left

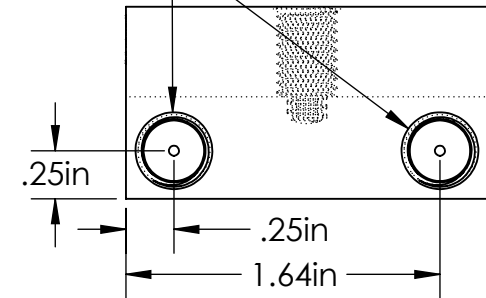


Front



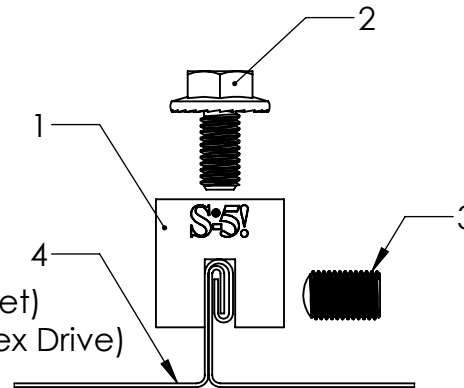
(2x) 3/8-24 Threaded Hole

Right



General Notes:

1. S-5-B Clamp
2. M8-1.25 Stainless Steel Hex Flange Bolt (13mm Socket)
3. 3/8-24 Stainless Steel Round Point Setscrew (3/16 Hex Drive)
4. Example roof



FOR STANDING SEAM SPECIFIC MECHANICAL LOAD TEST INFORMATION AND CLAMP INSTALLATION INFORMATION PLEASE VISIT: WWW.S-5.COM

MATERIAL: BRASS	 The Right Way!		METAL ROOF INNOVATIONS, LTD. 8655 TABLE BUTTE RD COLORADO SPRINGS, CO 80908 719-495-0518 719-495-0045(FAX)	
EST ASSEMBLY WEIGHT: 0.512 lbs			TITLE S-5-B	
SUPPLIED HARDWARE: M8-1.25 x 16 mm Bolt (2x) 3/8-24 x .500" Setscrews	SCALE: 1:1	DRAWING NO. B02-A-8-C	DRAWN BY Kati Kadakas	DATE 4/11/2016
EST. WEIGHT: Clamp: 0.457 lbs Setscrew: 0.0100 lbs Bolt: 0.0345 lbs	S-5!® PRODUCTS ARE PROTECTED BY MULTIPLE U.S. AND FOREIGN PATENTS. VISIT OUR WEBSITE AT WWW.S-5.COM FOR COMPLETE INFORMATION ON PATENTS AND TRADEMARKS.			